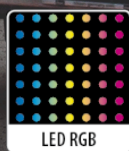


# VarioSign LED Warning Trailer

# PHAROS 2.39





## CHASSIS AND BODY

- Chassis and body of hot-galvanized steel
- Hot-galvanized, height-adjustable drawbar with overrun brake and holding brake
- DIN towing eye and spherical-head coupling changeable
- Height-adjustable support wheel
- 4 fully adjustable and individually controllable electrical supports
- 2 battery boxes of acid-proof plastic (1660 x 450 x 320 mm)

## ADVANCE WARNING BOARD

- 4 LED advance warning lamps tested according to TL warning lamps WL 7
- 3 LED variable message signs with an automatic and manual brightness adjustment for the static and dynamic representation of texts, symbols and road signs

### Upper LED variable traffic sign

Housing size:	1930 x 1210 mm
LED display surface:	1800 x 1080 mm
Pixels:	90 x 54
Grid dimension:	20 mm
LED/m <sup>2</sup> :	2500

### Medium-sized variable traffic-sign (optional)

Housing size:	1210 x 1210 mm
LED display surface:	1080 x 1080 mm
Pixels:	54 x 54
Grid dimension:	20 mm
LED/m <sup>2</sup> :	2500

### Lower variable traffic sign

Housing size:	1390 x 1810 mm
LED display surface:	1260 x 1680 mm
Pixels:	63 x 84
Grid dimension:	20 mm
LED/m <sup>2</sup> :	2500

- Automatic adjustment
- Libraries on a separate memory module
- Hydraulic lifting and lowering of the upper board, including a mechanism for mechanical emergency adjustment
- Combined manual radio-cable remote control for operating all functions via touchscreen and one-touch keys
- Free programming software

## ELECTRICAL SYSTEM

- Rechargeable battery, 24 V with up to 50 hours daytime operation (further energy packages on request)
- Trailer lighting optionally 12 V and/or 24 V
- Feed socket 230 V
- Battery guard for protection of electronics
- Battery charger

## ACCESSORIES AND OPTIONS

- Control and monitoring system
- Operating hours counter
- Interface package
- Wind sensor
- Up to 4 rechargeable batteries



Side view lowered



Side view lowered

## Technical data

Height lowered	3700 mm
Total weight	2500 kg
Empty weight depending on model	2050 kg
Total length	5950 - 5990 mm
Total width	2200 mm
Track width	2000 mm
Max. load capacity	450 kg
Height lifted	6850 mm

## VarioSign LED Warning Trailer PHAROS 2.39

## Order number

Advance LED Overhead Warning Trailer Pharos 2.39

129265-053



Further information  
NIS-01863  
Entry on [nissen-germany.com](http://nissen-germany.com)