

Safety Beacon

- Equipable with all common foil types on one or both sides
- Foil protected by surrounding edge
- Replaceable aluminium stand tube 40 x 40 mm
- Stackable without risk of slipping
- For use with beacon lamps BaKoLight LED and Konstant-Norm-LED



Dimensions (LxWxH)
1319 x 304 x 60 mm



Weight
3.6 kg

Safety Beacon

- Safety Beacon, one-sided, foil RA1, pointing left
- Safety Beacon, one-sided, foil RA1, pointing right
- Safety Beacon, two-sided, foil RA1, pointing left/right
- Safety Beacon, one-sided, foil RA2, pointing left
- Safety Beacon, one-sided, foil RA2, pointing right
- Safety Beacon, two-sided, foil RA2, pointing left/right
- Safety Beacon, two-sided, foil RA2, arrow pointing right/left
- Safety Beacon, two-sided, foil RA1 A, arrow pointing right/left
- Safety Beacon, two-sided, vertical hatched, foil RA2

Order number

- 071322-202
- 071324-202
- 071330-202
- 071322-22
- 071324-22
- 071330-22
- 071330-34
- 071330-36
- 071329-32

Accessories and Spare parts

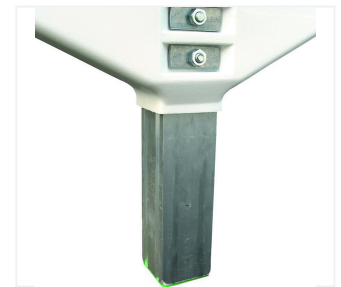
- Base plate TL 56 K1
- Spare tube with stopper
- Transport and storage rack for 60 to 72 beacons, depending on beacon type (Safety beacons, Standard Beacons and WeBaNi 60 = 68 pcs, WeBaNi 40 = 72 pcs.)

Order number

- 070293-1
- 071319-2
- 081600



Safety beacon system



Aluminium stand tube



Safety beacon vertical hatched



Transport and storage rack



Packaging Unit
60 pcs on one pallet
also available in other quantities



Further information
NIS-00224
Entry on nissen-germany.com

Verification number:
2000 2K 01 94 2K 013